

View Single Post

Thread: short term earthquake prediction?

Today, 08:25 AM

27

XanaduRanch 

Moderator



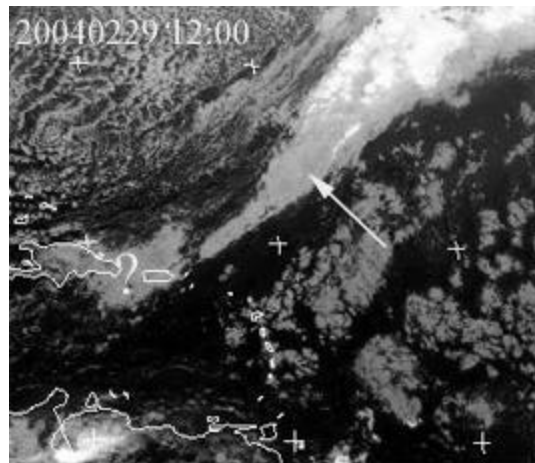
towerball Champion!

Snow Paul Champion!

Aim & Fire Champion!

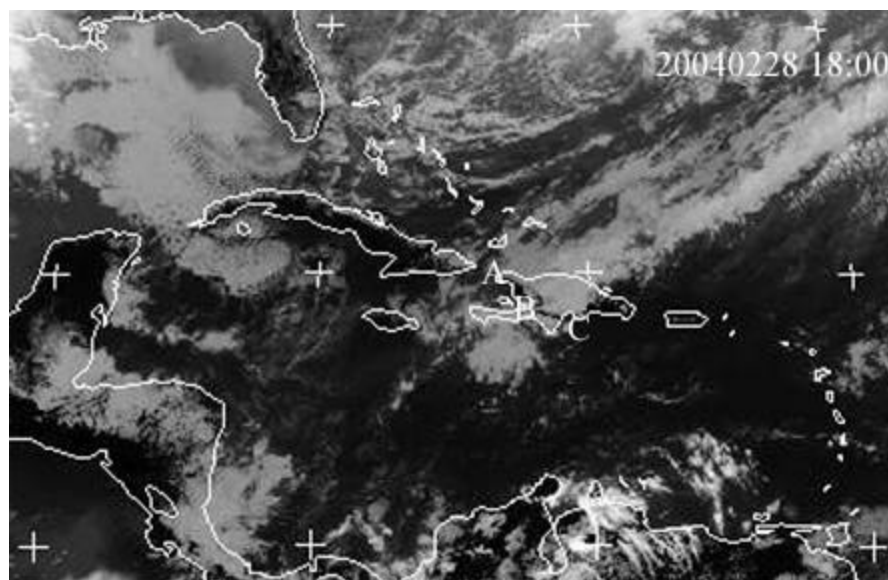
Join Date: Sep 2002

Posts: 2,349

 **OK. Let the Debate Begin!**

The 'Earthquake Cloud' of February 29, 2004

In a post on March 4, 2004 I passed along some information from Dr. Shou regarding his discovery of the image above. He concluded that the cloud formation above was a precursor to an earthquake of 5.0-6.0 magnitude somewhere in our area. You can view the original [post here](#). I received some other information from Dr. Shou, forwarded to me by Quaqualita that I never got around to posting which I would like to share now.



The Predicted Location of March 8, 2004

On March 8, 2004, Dr. Shou wrote, in reference to the image above, "There was a black line

"ABC" from northwest to southeast in Image 20040228 18:00. It looks like an active fault if there is no such a river. If you have good map or earthquake catalog, whose precision reaches magnitude of 1 ML or smaller, you can verify whether or not it is an active fault by yourself. I guess that the cloud implies an earthquake in the black line, but I am not sure whether or not my estimation is right."

That is, in fact a fault line. We discussed this southern fault system in depth many weeks ago in the earthquake thread. Last night a 5.3 magnitude earthquake occurred along this fault shaking Santo Domingo and felt in Santiago as well. That's exactly where it was predicted to be in the e-mails.

Keep in mind a 5.0+ magnitude earthquake here is not an every month occurrence. It's hardly even an every year occurrence. So the prediction of a 5.0-6.0 quake along this fault based on the cloud formation seen on February 29 is in my opinion pretty impressive.

What do you think?

Tom aka **XR** *You never really learn to swear until you learn to drive in the DR.*



Close this window